

KITO SINGLE SPEED ELECTRIC CHAIN HOIST **EQSS**

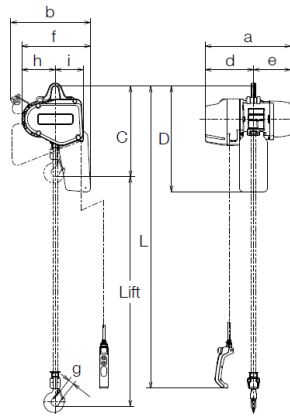


HIGHLIGHTS

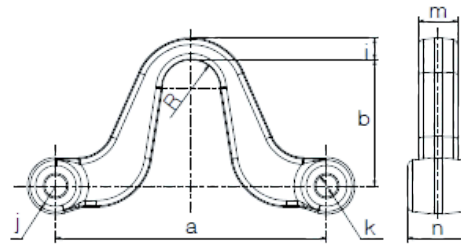
- > Pull Rotor Brake with 10 Years Warranty
- > 60%ED Heavy Duty Rating
- > Friction Clutch and E-OLL as Standard
- > Upper/Lower limit Switch as Standard
- > Emergency Stop Button as Standard
- > Grade 80 Nickel Plated Load Chain

TECHNICAL SPECIFICATIONS

Power Supply	Phase	3-Phase			
	Voltage & Frequency	415V, 50Hz			
Speed Control		Single Speed			
Capacity		125kg	250kg	500kg	1t
Classification	ISO/JIS/EN	M5	M5	M4	M4
	ASME HST	H4			
Motor size (kW)		0.5	0.5	0.75	1.5
Max Lifting Speed (m/min 50Hz)		14.2	8.3	6.3	5.9
Headroom (mm)		395		410	465
Weight (kg) *3M Lift		30		32	42
Operating Voltage		AC24V			
Enclosure		Hoist body: IP55 & Push Button: IP65			
Operating Temperature		-20 - +50°C			



EQSS Hoist



Suspension Eye

EQSS Hoist Dimensions

Capacity (t)	Product Code	Headroom C	D	a	b	d	e	f	g	h	i
125kg	EQ001S	395	485	417	367	230	187	298	27	137	128
250kg	EQ003S										
500kg	EQ005S	410	535	433	403	245	188	332	31	154	142
1	EQ010S	465									

Suspension Eye Dimensions

Capacity (t)	Product Code	a	b	R	i	k	j	m	n
125kg	EQ001S	139.6	67.5	16.5	8	12.2	16	16	33
250kg	EQ003S								
500kg	EQ005S	153.6	71	16.5	12.3	12.2	16	22	34
1	EQ010S								