

Trusted quality and design

# ***KITO RY SERIES WIRE ROPE HOIST***



# “Safety” is the foundation of manufacturing of Kito hoist

Kito's manufacturing begins with a focus on customers' "safety".

How to enhance "safety" is considered in every step of Kito's technical innovation.

This design philosophy forms the basis of Kito's RY Series Wire Rope Hoist.

RY Series Wire Rope Hoist, inspired by Kito's strict standard for safety, will provide exceptional values for users all over the world.



## Three elements of Kito hoists' "safety"

Kito believes that the following "three elements" are indispensable for safety of customers.

1. Supply quality products
2. Ensure that users understand safe and proper use
3. Ensure that users perform proper maintenance

Kito will continue to provide excellent services to customers in order to satisfy those elements above.



### "Reliability" backed by experience

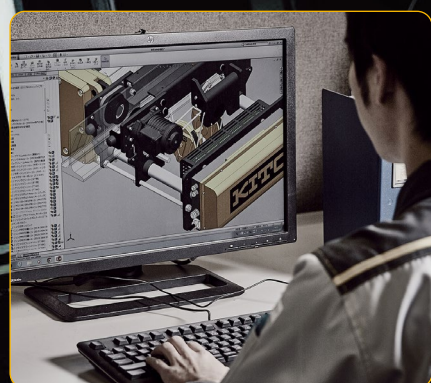
Based on the experience and the technology that have been cultivated through the history of manufacturing over a century, Kito provides reliable products to all over the world.

### To assure the "quality"

Every effort is made to improve the quality by utilizing the know-how accumulated over the years. To provide high-quality products, Kito has established its original standard for quality which is implemented in manufacturing, design and sales.

### Flexibility to meet the "needs"

Customized products are available to meet wide variety of customer needs. Kito will deliver "one of a kind" product that is suitable for every application environment.



# Kito technology

**RY Series is equipped with technologies and know-how accumulated through Kito's experience with electric chain hoists.**

## **1. Minimizes the swing of a load with Kito's "original inverter control"**

Kito's original inverter control makes a high level of safety and workability possible at the same time. Kito's original technology minimizes the drift in the load movement typical for an inverter control and stops the load at a minimum distance.

Furthermore, the soft start/stop function\* minimizes the swing of a load, contributing to work efficiency.

\*:Applies to lifting/lowering and traversing operations.

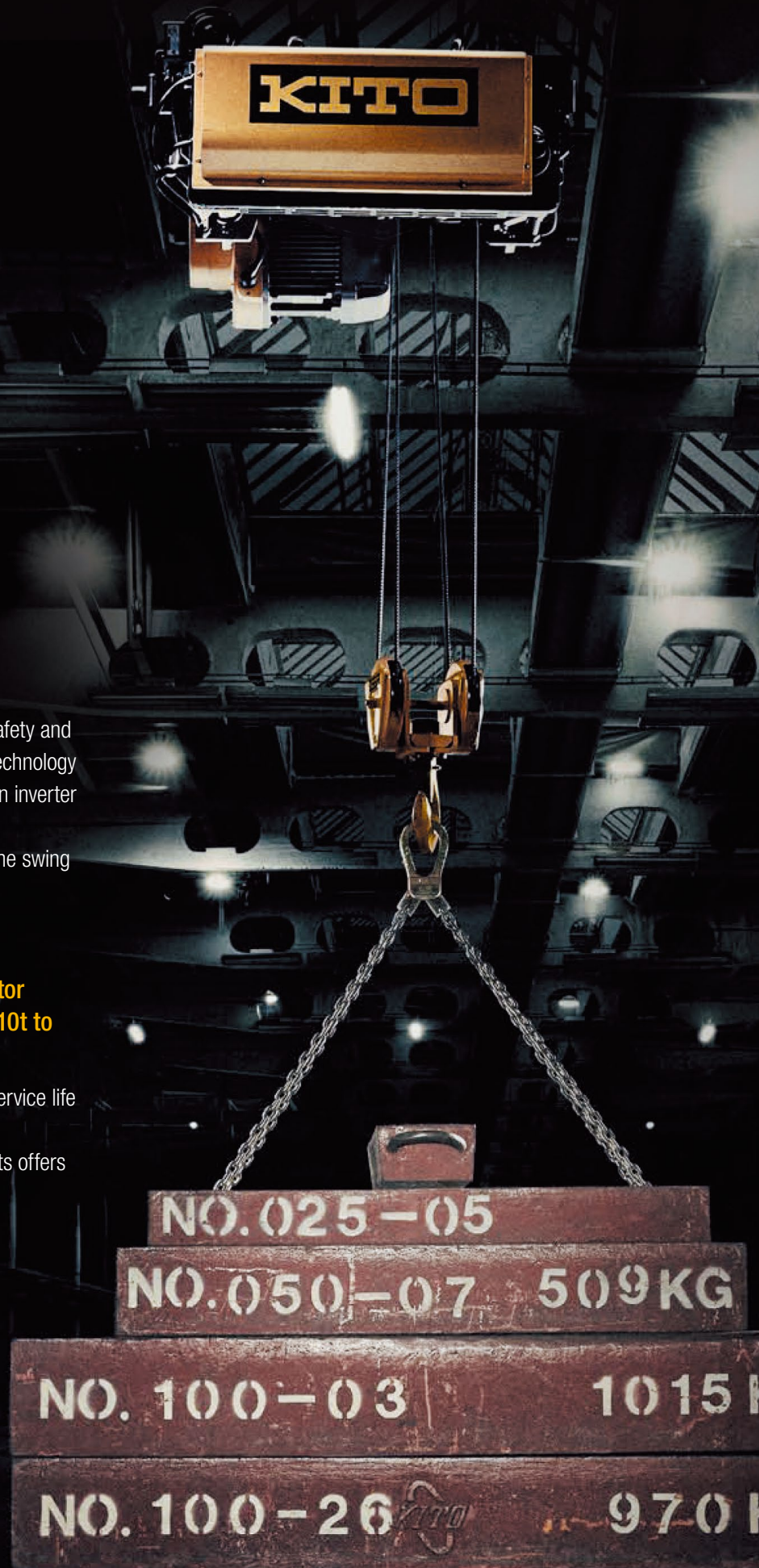
## **2. Equipped with a proven pull rotor type motor brake on 3t and 5t / magnetic disc brake on 10t to ensure a high level of safety**

The high-performance brake securely holds a load; service life is optimized with the inverter operation.

The simple structure with minimal electric components offers stable operation that is essential for productivity.

## **3. Adopts aluminum casing to reduce weight**

Low-pressure casting method is used to make a light-weight aluminum casing with excellent serviceability.



### Inverter technology



### Aluminum casing



## Features of Kito RY Series Wire Rope Hoist

### Safety

RY is equipped with cutting edge safety system and the control voltage has been lowered (3t and 5t: DC24V, 10t: AC24V) to ensure safety for the operators.

### Design

A simple, modern and functional design accommodates wide variety of applications and demands.

### Durability

Excellent durability and a long service life is offered by utilizing Kito's electric chain hoist technology and originally designed inverter.

### Productivity

The low-load high-speed function with the inverter is provided for better efficiency. Smooth movement is enabled with the soft start/stop function.

### Ease of operation

The ergonomic design makes it easy and effortless to use and provides comfortable operations even for long working hours.

### Total cost

Maintenance time required is reduced by improved service life and serviceability, providing more value over time.

# Product highlights

## Safety

### **Equipped with the inverter as standard (lifting / lowering and traversing)**

Smooth operation with the anti-jogging feature for lifting/lowering. The soft start/stop minimizes the swing of a load.

### **Electronic overload limiter**

Detects overload instantaneously and shuts off the circuit for lifting.

### **Electronic thermal motor protection**

Detects overheat and stops the operation to protect the motor.

### **Upper/lower limit switch**

Upper/lower limits are externally adjustable to set the range of operation.

### **Rope guide**

Full wrap rope guide keeps the rope securely in the groove.

### **Lower control voltage for the pendant**

3t and 5t: DC24V, 10t: AC24V for improved safety

## Durability

### **High-performance pull rotor type motor brake on 3t and 5t, magnetic disc brake on 10t**

Durable brake rated for more than 1 million cycles.

## Serviceability

### **CH meter (inverter built-in function)**

The number of starts and operating hours are displayed on the LED, enabling users to perform maintenance and inspection in accordance with the frequency of use.



## Performance

### **Wire rope (high-strength wire rope)**

Equipped with high-strength wire rope to reduce weight and size of the unit (5t models or higher).

### **Low headroom model**

Minimum headroom for efficient use of work space.

### **Low-load high-speed function (lifting / lowering)**

Operates at 1.5 times the rated speed with a load less than 25% of rated capacity for enhanced productivity.

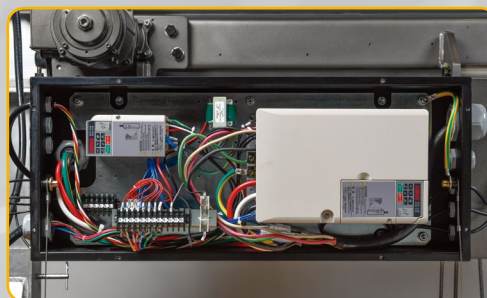
### **Wide flange range**

Suitable for crane girders with various flange widths.



## Advantages of inverter

- Smooth movement
- Soft start/stop minimizes load swing.
- High and low speed adjustability. Max ratio of 6:1.
- Includes standard count hour meter that records and displays the number of lifting/lowering starts and hoist on time for preventative maintenance.
- **Electronic overload limiter:** Detects overload instantaneously and shuts off the circuit for lifting.
- **Electronic thermal motor protection:** Detects overheating and stops the motor.
- **No load high speed function:** Operates at 1.5 times the standard high speed with a load less than 25% of rated capacity.
- Better maintainability



Inverter control – hoist and trolley

## Lineup

Capacity	3 t	5 t	10 t
Low headroom	●	●	●

- Double girder option will be available soon.
- Contact Kito for information on the release date of a particular model.

# Features of each part

## No Load High Speed Function

Operates at 1.5 times the standard high speed with a load less than 25% of rated capacity.

## Rope Drum

Deep grooved, high strength drum for durability and long service life.

## Full 360° Rope Guide

Made of a high strength polymer for durability, keeps the rope securely in the groove on the drum. Simple design makes replacement easy.

## Externally Adjustable Upper/Lower Limit Switches

Set the range of operation with easy adjustment.

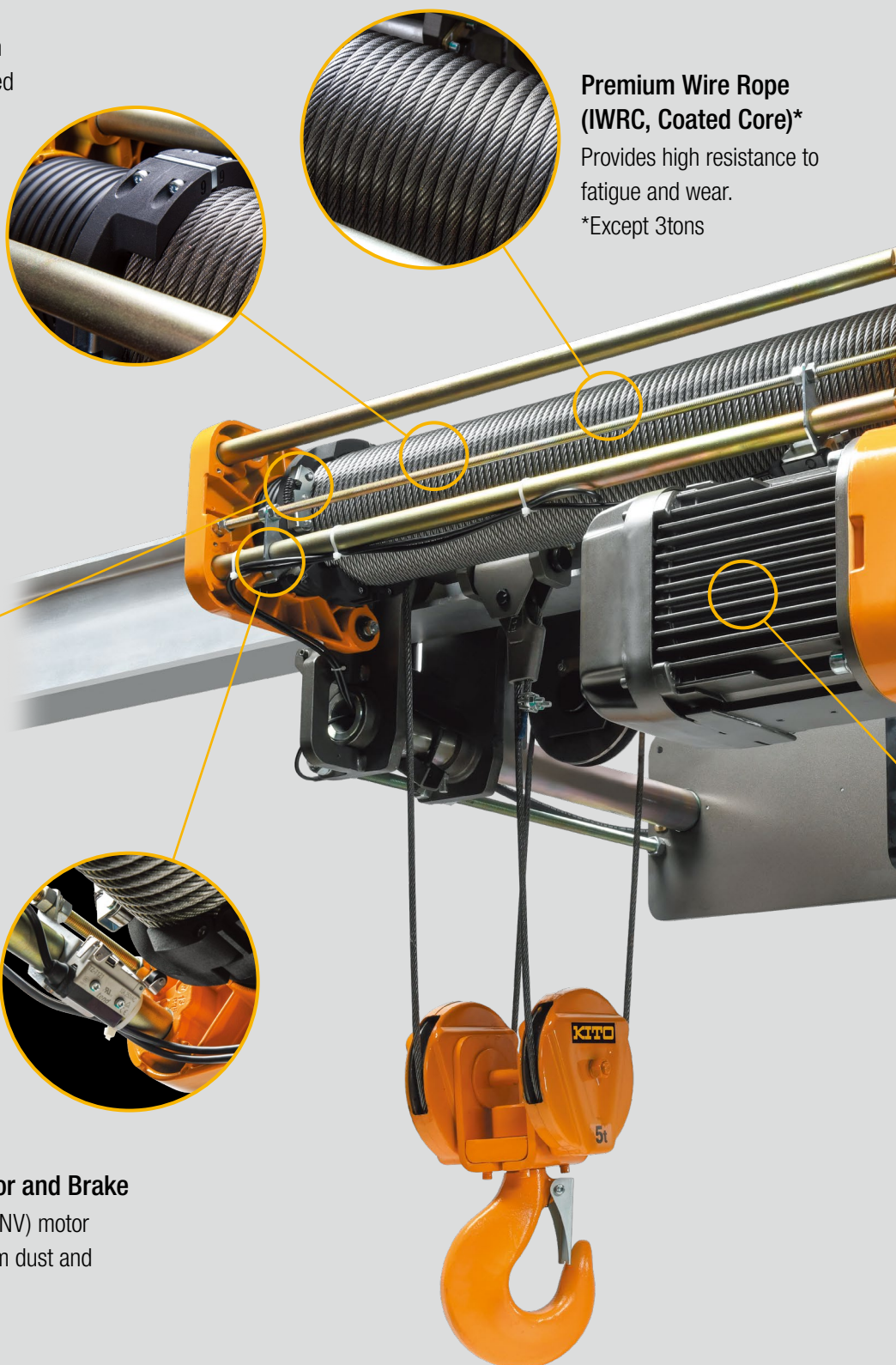
## Externally Adjustable Trolley Motor and Brake

IP55 totally enclosed non ventilated (TENV) motor with cooling fins ensures protection from dust and water and enhances motor life.

## Premium Wire Rope (IWRC, Coated Core)\*

Provides high resistance to fatigue and wear.

\*Except 3tons



\*Actual product comes with a drum cover.



### Electronic Overload Limiter

Detects overload instantaneously and shuts off the circuit for lifting.



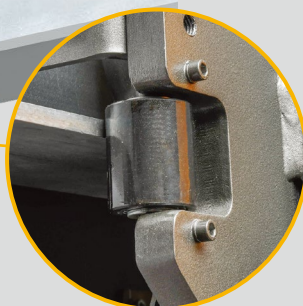
### Standard Rubber Trolley Buffers

Provides protection from collisions.



### Built-In Bumpers

Security for the operator and the equipment.



### Standard Guide Rollers

Reduce wheel friction and noise while providing smooth travel and increased life of wheel and beam.



### Inverter Control – Hoist and Trolley

Soft start/stop minimizes load swing. High and low speed adjustability. Max. ratio of 6:1.

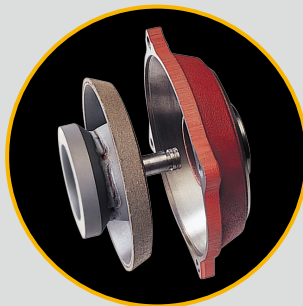
### Count Hour Meter

Records and displays the number of starts and hoist on time which is valuable for preventive maintenance. Integral to the inverter.



### Heavy Duty Hoist Motor

Totally enclosed fan cooled (TEFC) motor with class F insulation and a ribbed frame for maximum cooling and durability. IP44 rating ensures a high level of protection from the entrance of dust and water.



### Electronic Thermal Motor Protection

Detects overheating and stops the motor.



### High Performance Motor Brakes

The Pull-Rotor motor brake on 3 and 5 Ton and Magnetic Disc Brake on 10 Ton provide reliable operation and exceptional durability.

# Technical materials

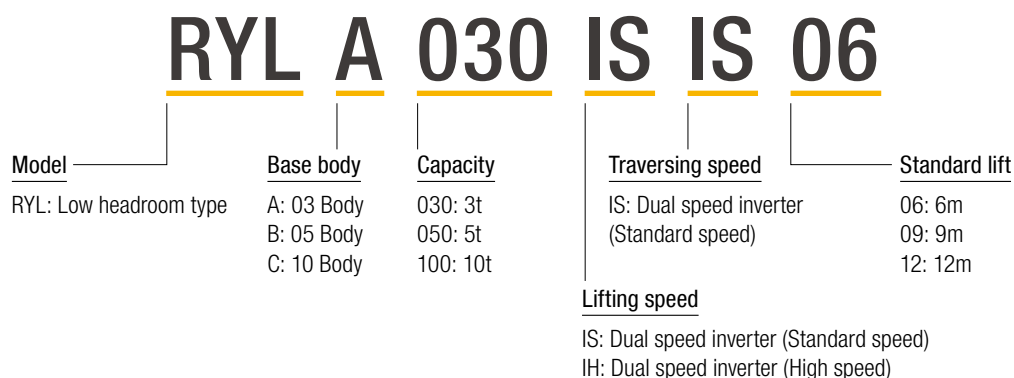
## Model list

Capacity (t)	Lifting speed	flange width (mm)			
		125-175	176-350	150-350	351-500
3	standard	●	●	–	●
	high	●	●	–	●
5	standard	●	●	–	●
	high	●	●	–	●
10	standard	–	–	●	●

## Standard specification

Power supply	3Phase 200 - 230V 50/60Hz 3Phase 380 - 460V 50/60Hz
Control voltage	3t / 5t: DC 24V 10t: AC 24V
Intermittent ratings	Lifting: 60%ED (high speed: 40%, low speed: 20%) 360 starts/hr Traversing: 30%ED (high speed: 20%, low speed: 10%)
Protection construction	IP44 (IP65 for push button switches)
Operation	Pendant control
Ambient temperature	-20°C to +40°C
Humidity	90%RH or less (no condensation)
Color	Kito Yellow (Equivalent to Munsell 7.2YR6.5/14.5), Kito Metallic Gray

## Product code



## Intermittent rating and start-up frequency

$$\text{Intermittent rating (\%ED)} = \frac{\text{Maximum time of operation allowed in 1 hour (min.)}}{60 \text{ min.}} \times 100$$

Start-up frequency = Maximum number of starts allowed in 1 hour

## Hoist classifications

### ISO

State of loading		Total duration of use (h)							
		200	400	800	1600	3200	6300	12500	25000
<b>Light</b>	Mechanisms subjected very rarely to the maximum load and, normally, to light loads	–	–	M1	M2	M3	M4	M5	M6
<b>Moderate</b>	Mechanisms subjected fairly frequently to the maximum load but, normally, to rather moderate loads	–	M1	M2	M3	M4	M5	M6	–
<b>Heavy</b>	Mechanisms subjected frequently to the maximum load and, normally, to loads of heavy magnitude	M1	M2	M3	M4	M5	M6	–	–
<b>Very heavy</b>	Mechanisms subjected regularly to the maximum load	M2	M3	M4	M5	M6	–	–	–

This classification refers to ISO 4301-1 and applies to the mechanical components including gears and bearings except for consumable parts. The Grade Symbols Are Identical To Those Of Asme Hst-1M. (Performance Standard For Electric Chain Hoist)

# Technical materials

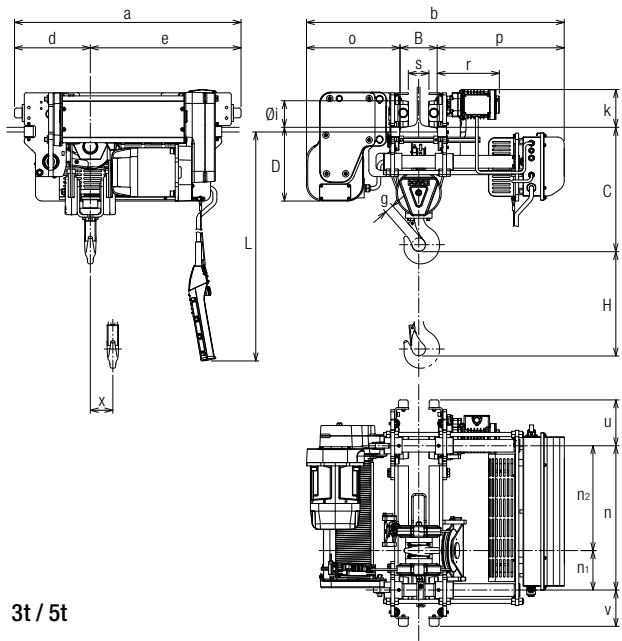
## Specification list

Capacity (t)	Product code	Standard lift (m)	Flange Width (mm)	Lifting: Inverter operation				Traversing: Inverter operation			Wire Rope			ISO	Weight		
				Motor		Speed		Motor		Speed	Rope diameter (mm)	Reeving	Construction		Main unit (kg)	Hook (kg)	
				Output (kW)	Intermittent rating (%ED)	With a Rated Load High and low Speed m/s (m/min)	With a *1 Low Load m/s (m/min)	Output (kW)	Intermittent rating (%ED)	High and low speed m/s (m/min)							
3	RYLA030ISIS06	6	125 to 175	3.5	0.083 to 0.014 (5.0 to 0.833)	0.125 (7.5)										375	
			176 to 350													380	
			351 to 500													385	
	RYLA030IHIS06	6	125 to 175	5.0	0.133 to 0.022 (8.0 to 1.333)	0.200 (12.0)											375
			176 to 350														380
			351 to 500														385
	RYLA030ISIS09	9	125 to 175	3.5	0.083 to 0.014 (5.0 to 0.833)	0.125 (7.5)	40/20	0.25	20/10	0.333 to 0.056 (20 to 3.333)	Ø8	4/1	6 x Fi(29) B type JIS G 3525 1770N/mm <sup>2</sup> (Standard wire rope)	M5			405
			176 to 350														410
			351 to 500														415
	RYLA030IHIS09	9	125 to 175	5.0	0.133 to 0.022 (8.0 to 1.333)	0.200 (12.0)	40/20	0.25	20/10	0.333 to 0.056 (20 to 3.333)	Ø8	4/1	6 x Fi(29) B type JIS G 3525 1770N/mm <sup>2</sup> (Standard wire rope)	M5			405
			176 to 350														410
			351 to 500														415
RYLA030ISIS12	12	125 to 175	3.5	0.083 to 0.014 (5.0 to 0.833)	0.125 (7.5)											440	
		176 to 350														445	
		351 to 500														450	
RYLA030IHIS12	12	125 to 175	5.0	0.133 to 0.022 (8.0 to 1.333)	0.200 (12.0)											440	
		176 to 350														445	
		351 to 500														450	
5	RYLB050ISIS06	6	125 to 175	5.0	0.083 to 0.014 (5.0 to 0.833)	0.125 (7.5)										395	
			176 to 350													400	
			351 to 500													405	
	RYLB050IHIS06	6	125 to 175	8.0	0.133 to 0.022 (8.0 to 1.333)	0.200 (12.0)											415
			176 to 350														420
			351 to 500														425
	RYLB050ISIS09	9	125 to 175	5.0	0.083 to 0.014 (5.0 to 0.833)	0.125 (7.5)	40/20	0.4	20/10	0.333 to 0.056 (20 to 3.333)	Ø8	4/1	IWRC 6 x P/WS(26) Compliant with JIS G 3546 2160N/mm <sup>2</sup> (High-strength wire rope)	M5			425
			176 to 350														430
			351 to 500														435
	RYLB050IHIS09	9	125 to 175	8.0	0.133 to 0.022 (8.0 to 1.333)	0.200 (12.0)	40/20	0.4	20/10	0.333 to 0.056 (20 to 3.333)	Ø8	4/1	IWRC 6 x P/WS(26) Compliant with JIS G 3546 2160N/mm <sup>2</sup> (High-strength wire rope)	M5			445
			176 to 350														450
			351 to 500														455
RYLB050ISIS12	12	125 to 175	5.0	0.083 to 0.014 (5.0 to 0.833)	0.125 (7.5)											460	
		176 to 350														465	
		351 to 500														470	
RYLB050IHIS12	12	125 to 175	8.0	0.133 to 0.022 (8.0 to 1.333)	0.200 (12.0)											480	
		176 to 350														485	
		351 to 500														490	
10	RYLC100ISIS09	9	150 to 350	13.2	0.100 to 0.017 (6.0 to 1.0)	0.150 (9.0)	40/20	0.75	20/10	0.333 to 0.056 (20 to 3.333)	Ø13	4/1	IWRC 6 x P/WS(31) Compliant with JIS G 3546 2160N/mm <sup>2</sup>	M5			1015
			351 to 500														1025
	RYLC100ISIS12	12	150 to 350	13.2	0.100 to 0.017 (6.0 to 1.0)	0.150 (9.0)	40/20	0.75	20/10	0.333 to 0.056 (20 to 3.333)	Ø13	4/1	IWRC 6 x P/WS(31) Compliant with JIS G 3546 2160N/mm <sup>2</sup>	M5			1090
			351 to 500														1100

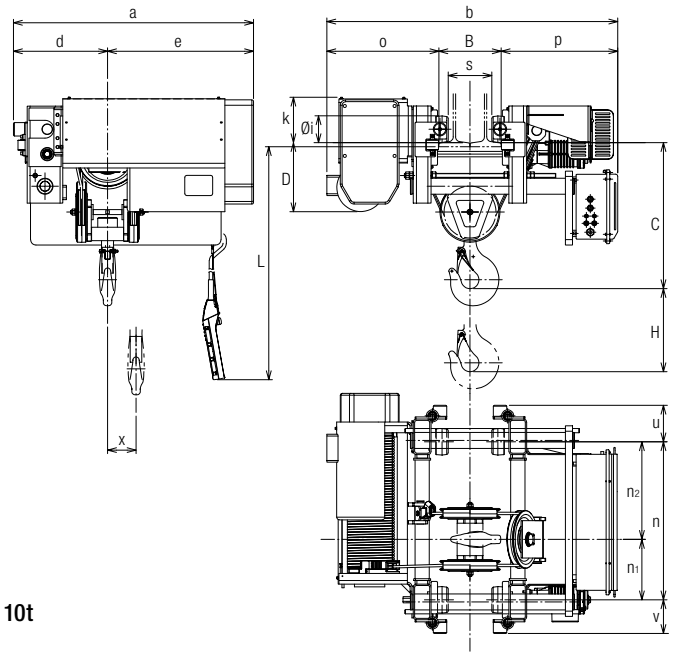
\*1: For other flange options, please ask Kito distributor in your region.

\*2: The weight of the main unit includes the weight of the hook.

\*3: Lifting/lowering a load less than 25% of the rated capacity at a speed of 1.5 times the high speed (this function may be turned off).



3t / 5t



10t

Dimension table (mm)

Capacity (t)	Product code	Standard lift H (m)	Flange width B (mm)	C	D	L	a	b	d	e	g	i	k	n	n <sub>1</sub>	n <sub>2</sub>	o	p	r	s	u	v	x	
3	RYLA030ISIS06 RYLA030IHIS06	6	125 to 175			5700	1067	1215	710					680		494		649 to 599						106
			176 to 350					1390										773 to 599						
			351 to 500					1540										748 to 599						
	RYLA030ISIS09 RYLA030IHIS09	9	125 to 175	635	348	8700	1279	1215	357	922	43	Ø125	178	892	186	706	441		649 to 599	293	B-80	216	171	160
			176 to 350					1390											773 to 599					
			351 to 500					1540											748 to 599					
	RYLA030ISIS12 RYLA030IHIS12	12	125 to 175			11700	1491	1215	1134						1104		918		649 to 599					213
			176 to 350					1390											773 to 599					
			351 to 500					1540											748 to 599					
5	RYLB050ISIS06 RYLB050IHIS06	6	125 to 175			5700	1067	1215	710					680		494		649 to 599						106
			176 to 350					1390										773 to 599						
			351 to 500					1540										748 to 599						
	RYLB050ISIS09 RYLB050IHIS09	9	125 to 175	650	348	8700	1279	1215	357	922	45	Ø125	186	892	186	706	441		649 to 599	342	B-80	216	171	160
			176 to 350					1390											773 to 599					
			351 to 500					1540											748 to 599					
	RYLB050ISIS12 RYLB050IHIS12	12	125 to 175			11700	1491	1215	1134						1104		918		649 to 599					213
			176 to 350					1390											773 to 599					
			351 to 500					1540											748 to 599					
10	RYLC100ISIS09	9	150 to 350	820	388	8700	1348	1633	528	820	72	Ø150	256	339	628		855 to 655	631	B-105	205	189	213		
			351 to 500				1783	804 to 655																
	RYLC100ISIS12	12	150 to 350			11700	1563	1633	1783	1035						763		855 to 655					213	
			351 to 500					1783										804 to 655						

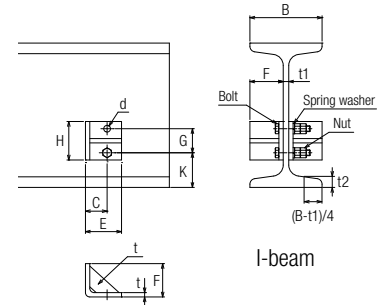
•Select the flange width when purchasing the product.

# Technical materials

Stopper dimension table (mm)

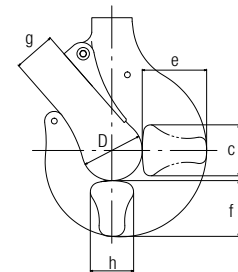
Capacity (t)	Product code	F*	Selection	H	E	G	C	B	t	K	Ød			
3	RYLA030ISIS	(B-t1) /2	F≤90	80	C+25	50	40	125 to 500	9	t2+60	14 (M12)			
	RYLA030IHIS		F>90	100	C+30	60	45				18 (M16)			
5	RYLB050ISIS		F≤90	110	C+35	65	50				150 to 500			22 (M20)
	RYLB050IHIS		F>90											
10	RYLC100ISIS	(B-t1) /2+15	—	120	C+35	65	50	150 to 500						

\*: Rounded down to a whole number



Hook dimension table (mm)

Capacity (t)	Product code	D	g	h	f	e	c
3	RYLA030ISIS	63	43	45	58	67	53
	RYLA030IHIS						
5	RYLB050ISIS	71	45	53	67	80	63
	RYLB050IHIS						
10	RYLC100ISIS	100	72	75	95	112	90



Rated current (A)

Capacity (t)	Product code	200-230V		380-460V	
		50Hz/60Hz		50Hz/60Hz	
		Lifting motor	Traversing motor	Lifting motor	Traversing motor
3	RYLA030ISIS RYLA030IHIS	18.0	1.6	9.5	0.8
		29.5		15.0	
5	RYLB050ISIS RYLB050IHIS	29.5	2.0	15.0	1.0
		46.0		24.0	
10	RYLC100ISIS	60.0	3.3	30.0	1.6

Permissible cable length

Capacity (t)	Product code	200V Grade				400V Grade				
		Wire size (mm <sup>2</sup> )	Permissible cable length (m)		Wire size (mm <sup>2</sup> )	Permissible cable length (m)				
			50Hz / 60Hz			50Hz	60Hz	50Hz / 60Hz		
			220V	230V				380V	415V	440V
3	RYLA030ISIS	5.5 (8)	40 (58)	41 (60)	2 (3.5)	47 (83)	47 (83)	52 (91)	55 (97)	58 (101)
	RYLA030IHIS	8 (14)	36 (64)	38 (67)	3.5 (5.5)	54 (85)	54 (85)	59 (93)	63 (99)	66 (103)
5	RYLB050ISIS	8 (14)	36 (63)	37 (66)	3.5 (5.5)	53 (84)	53 (84)	58 (92)	62 (98)	65 (102)
	RYLB050IHIS	14 (22)	41 (65)	43 (68)	5.5 (8)	54 (78)	54 (78)	59 (86)	62 (91)	65 (95)
10	RYLC100ISIS	14 (22)	43 (69)	47 (74)	3.5 (5.5)	30 (48)	34 (53)	35 (55)	44 (69)	48 (76)

\*Figures in ( ) are for larger size.

# Safety precautions

---

1

## Installation

Installation of the hoist must be carried out only by a professional or a qualified personnel.

- Install the hoist only in an environment in which the hoist is intended for.
- Be sure to create a proper grounding connection.
- Be sure to attach stoppers at the ends of the trolley and crane beams.
- Make sure that the structural strength is sufficient at the site of installation.
- Do not modify the product and its accessories.

2

## Regulation on use

Do not perform the following legally prohibited actions.

- Lifting more than rated load for the hoist.
- Lifting, supporting or transporting people.
- Lifting or supporting loads over people.

3

## Selection of a model

Make sure to carefully check the listed specifications to select a model.

Consult Kito for specifications not covered in this guide.

- Ensure that the voltage of the power supply is proper for the hoist.
- Do not operate the hoist beyond its duty rating (intermittent rating and start-up frequency).

4

## Legal requirements regarding inspection

The following actions are required for users of the hoist.

- Implementation of daily inspection.
- Implementation of monthly and yearly self-inspection.
- Storage of the monthly and yearly self-inspection record for three years.

5

## Other

- Make sure to understand the information and the warnings in the Owner's manual provided with the product before use.



#### Head Office & Factory

2000 Tsujijarai Showa-Cho, Nakakoma-Gun, Yamanashi 409-3853, Japan  
TEL: +81-55-275-7521 FAX: +81-55-275-6162

#### Tokyo Head Office

SHINJUKU NS Bldg. 9F, 2-4-1 Nishi-Shinjuku, Shinjuku-ku, Tokyo 163-0809, Japan  
TEL: +81-3-5908-0180 FAX: +81-3-5908-0189  
kito.co.jp/en KITO Global Website: kito.com

## International Sales Subsidiaries

### U.S.A.

#### Harrington

401 West End Avenue, Manheim, PA 17545, U.S.A.  
TEL: +1-717-665-2000 FAX: +1-717-665-2861  
harringtonhoists.com

#### Peerless

1416 East Sanborn St. Winona, MN 55987, U.S.A.  
TEL: +1-800-873-1916 FAX: +1-800-356-1149  
peerlesschain.com

### CANADA

#### Kito Canada

309-3815 1st Ave., Burnaby, BC V5C 3V6, Canada  
TEL: +1-604-291-9955 FAX: +1-604-294-8855  
kito.ca

### BRAZIL

#### Kito Brazil

Unidades 37-38 do CLE – CENTRO LOGISTICO EMBU  
Rua José Semião Rodrigues Agostinho, 1370,  
Bairro Água Espraiada – Embu das Artes, SP, Brasil  
TEL: +55-11-3253-1000 FAX: +55-11-3253-1008  
kito.com.br/

### GERMANY

#### Kito Europe

Heerdter Lohweg 93, D-40549 Düsseldorf, Germany  
TEL: +49-(0)211-528009-00 FAX: +49-(0)211-528009-59  
kito.net

### ITALIA

#### Kito Chain Italia

Via Giuseppe Verdi 11, 33018, Tarvisio (Ud), Italia  
TEL: +39-(0)428-4171 FAX: +39-(0)428-417301  
kitochainitalia.com

### FINLAND

#### Kito Erikkila

Masalantie 225, 02430, Masala, Finland  
TEL: +358-9-2219-0530 FAX: +358-9-297-5021  
erikkila.com

### NETHERLANDS

#### Kito Van Leusden

Parelhoenweg 2 NL - 4791 PA Klundert  
Harbour number M457 A The Netherlands  
TEL: +31-168-385-225 FAX: +31-168-385-230  
vanleusden.com

### AUSTRALIA

#### Kito PWB

441 Grimshaw Street, Bundoora, VIC 3083, Australia  
TEL: +61-1300-792-262 FAX: +61-3-9467-7290  
kitoawb.com.au/

### CHINA

#### Jiangyin Kito

18 Cheng Jiang East Road, Jiang Yin, Jiang Su 214429, China  
TEL: +86-510-86199700 FAX: +86-510-86196633  
kaicheng.com

#### Kito Shanghai

Room 11J, Zao-Fong Universe Building,  
No1800 ZhongShan West Road Shanghai 200235, China  
TEL: +86-21-54488935 FAX: +86-21-54488937  
kito.com.cn

### TAIWAN

#### Kito Taiwan

12F-1, 128c sec. 3, Ming-Shen East Road, Taipei, Taiwan 10596  
TEL: +886-2-2719-7616 FAX: +886-2-2719-6900  
tw.kito.com

### KOREA

#### Kito Korea

3Dong 903, 15, Pangyo-Ro 228Beon-gil, Bundang-gu,  
Seongnam-si, Gyeonggi-do, Korea 13487  
TEL: +82-31-600-7450 FAX: +82-31-600-7469  
kito.kr

### THAILAND

#### Siam Kito

205 M.2, T.Klongtumru, A.Muangchonburi, Chonburi 20000, Thailand  
TEL: +66-3819-5711 FAX: +66-3846-8195  
siamkito.co.th

### INDIA

#### Kito India

Sy No 118/2 of Jakkur Village, 80 Feet Road,  
Jakkur Post, Yelahanka Hobli, Bengaluru – 560064, Karnataka, India  
TEL: +91 80 29503090  
kito.co.in

### INDONESIA

#### Kito Indonesia

JL. Kenari Raya Block G2-10A, Delta Silicon 5, Lippo Cikarang, Bekasi, Indonesia  
TEL: +62-21-2961-2150 FAX: +62-21-2961-2151  
id.kito.com/id

- The functions and performance of the products mentioned in the catalog have been designed based on the related regulations and standards. If they are used for other than their intended purposes such as being integrated into your equipment, we will not take any responsibility for accidents attributable to their unintended usages as well as guarantee their performance and functions. Never remodel our products.
- When you want to use our products for special purposes, consult us in advance.
- When you want to export our products, consult us in advance. There are different standards and regulations from one destination to another.
- It is prohibited to reprint, copy or divert all the information in this catalog (product patents, trademarks, photos, designs, copies, illustrations, etc.) without our consent.
- The specifications in this catalog are partly subject to change without prior notice.
- Product specifications may vary depending on the country. For more details please contact the nearest KITO dealer.